

Learn about our events

M Events held every month

R Reservation required

"Welcome Week"
4/23 (tue) - 27(sat)

Welcome week for every one!

colors stand for...

Consultation related events

Guidance

Chat time !

Events for families

SMD "Smile Multicultural day"
Our English speaking staff are here
to help every Friday.



M **R**

**Psychotherapist
consultation day**
(Private session)



Psychotherapist will listen and provide you advise and information about your concerns and anxiety in parenting. You can talk in the play area or in a private room.

M **R**

Midwife consultation day
(A group or private consultation)




Feel free to ask any questions. Anything from breast feeding, parenting skills, your physical concerns, etc. Expectant moms/dads are also welcome!

R

**Nutritionist
consultation day**



Feel free to join the group and ask any questions and concerns you have. When/How to start baby's food...

R Consultation with
the head teacher
of a nursery in the Nishi
Ward 

Come and consult the Head teacher
of a Nursery.
Priority goes to family with children
before entering kindergarten,
and family living in the Nishi Ward.

M **R** 

Nursery Concierge
consultation day
(Private session)

The Nishi ward's nursery/ education
concierge will come and talk about what
you'd like to know about nursery.
Kindergarten etc..

M **R** 

Childcare Support Partner
consultation day on Zoom
(Private session)

You can consult the Childcare
Support Partner on Zoom.
About your child, yourself or any other
worries in parenting etc..

M **R** 


Smile Mirai day
~for to-be moms and dads~

Come to Smile Port and chat with the
staffs and families at Smile Port and get
connected!! We will give you tips how
to bathe a newborn baby.

M **R** 

Smile Debut day

For families new to Smile Port.
Come on the day and we will guide
you around the facility.
※For those coming to Smile Port for
the first time are welcome to come
on other days beside the Debut day.

M **R** 

Guidance day for Yokohama
Childrearing Support System

For families wishing to leave their
children with a childcare provider.
A volunteer support in the community.



Smile☆Chat Time

Chat time for families that have concerns about children with developmental disability or difficulties.



Chat Time! for family with both childcare and elderly care

Do you have any stress with childcare and elderly care in the family?
If so, come and feel free to talk out!



Chat Time! ~for family with Down's Syndrome or other disability~

Chat time with other families about daily life, physical developments, kindergarten, school etc.



Chat time ! with Childcare Support Partner



You can consult the Childcare Support Partner in the play area.
About your child, yourself etc..



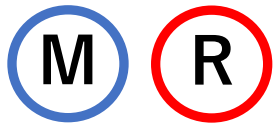
Chat Time! for mums going back to work!

Get tips and advice from working mums.
Find out how to juggle work and family,
how to make "Me time" etc...



"Smile Multicultural day"

**Our English speaking staff are here
to help every Friday.**



Participation is possible only once during the period 2023.4-2024.3

Music and Movement program in English

We sing, we dance, we move, we play, and we learn together!

There will be lots of fun in English!

Recommended age: 6months-



Story Time

A short story time at the end of morning and afternoon session.

Our staff will introduce books that little ones can enjoy.



Play Time! with a Nursery teacher

A nursery teacher from Roset Nursery will come and introduce a special exercise for babies. There will also be Q&A time! Suitable for babies when they gain sufficient neck strength.



N Clap Bakery

A Baker in Nishi Ward will come to Smile Port! Come and buy your breads here!!

CASH ONLY



Story Time by volunteer groups

Story time at the end of morning session

by volunteer groups

"I love this book (Kono hon daisuki)" and "Po Po Po".



Story Time! By a Librarian

A librarian from the Central Library will give you tips on how to choose books. There will be story time too!

R



Play Time! Parent and Toddlers

Stimulate your baby's senses through songs and play.
Recommended for babies in their crawling stage (before walking).

R



Play Time! for 2-3years old kids

Physical play and crafts activities.
Have fun with your children.
Suitable for ages before entering kindergarten.

M



Play time ! with Daddy Yoshimoto

Yoshimoto-san, a volunteer Dad will come and play with your children.
Find him wearing an apron.

R



Mom and Dad to-be are welcome !

Twins & Triplets Event

There will be flea market/ time to learn about nursery and kindergarten/ English eurhythmic and others!!
Collaboration event with the "Hamamirai☆Twins".

R



Events for Dads

Feel free to join an event time for dads.
You can learn tips on how to play with your children, how to read books etc..

R



Smile (^_^) "Get Connected" Project

Program for families with first child (baby-12months) living in Nishi Ward.
We will be meeting at 4 different places throughout the year.
Get Connected!



"Smile Port" in the Park

Let's meet and play at the parks near Smile Port. Our staff will be there!



Calling ! Supporters & Little Supporters!

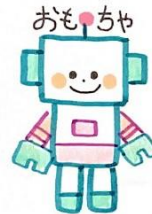
Fun volunteer activity for parents and children! Tells us what you are good at or give ideas on what we can do together.

Our activity includes cutting out crafts for the displays in the play area etc...



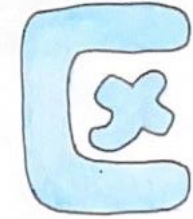
Let's find out about Kindergarten

The principals of Nurseries from Nishi ward will come and talk about the difference between nurseries and Kindergarten, and the daily life at kindergarten. There will be time for Q&A.



Toy Doctor

Bring your toys that need fixing!
Toys, dolls, and stuffed animals etc.
"Toy doctor" will fix it!
*Please note that not all can be fixed.



Nishi Ward Event

Play area limited due to a Ward Event

Wednesday)
9:30-10:45



Baby Massage

A great way to relax with your baby.
We won't be using oils.
Choose a simple T-shirt and pants for your baby (not body suit)
Suitable for babies ~ 18 months.



初めてのベビーマッサージ

対象年齢1歳半まで

オイルを使わないベビーマッサージです。
ママもお子さんもみんなでリフレッシュしましょう！
お子さんは上下の分かれているTシャツ・動きやすい
ズボン・飾りのない服装でご参加ください。

Baby Massage

A great way to relax with your baby.
We won't be using oils.
Choose a simple T-shirt and pants for
your baby (not body suit)
Suitable for babies~18months.