

M



## やさしい日本語（にほんご）で おしゃべり

外国（がいこく）の方（かた）とその家族（かぞく）  
のためのイベント（いべんと）です。  
やさしい日本語（にほんご）でおりがみをしたり、  
歌（うた）をうたったりするプログラムです。



Let's chat in simple Japanese!  
Learn Origami  
and Japanese nursery songs ♪

第4金曜日 Every 4<sup>th</sup> Friday  
10:15-11:15

2024 4/26, 5/25, 7/26, 8/23  
9/27, 10/25, 11/22, 12/27  
2025 1/24, 2/28, 3/28

7/27・9/27 保育園・幼稚園のこと教えます！  
Learn about nursery system.

Programs available in English and  
simple Japanese.

R



保育園（ほいくえん）や  
幼稚園（ようちえん）のことを  
おしえます！

## Learn about Nursery Service

Learn about the nursery service from  
The nursery concierge and find out  
which one suits you best.  
Interpreters available. Please inquire.

7/26・9/27  
Time: 10:30-11:30

R



## がいこくじん しえん いべんと 外国人支援イベント

よこはましこくさいこうりゅうきょうかい  
YOKE(横浜市国際交流協会)と  
連携（れんけい）して外国（がいこく）と  
つながる家族（かぞく）のためのイベントを  
開催（かいさい）します。  
通訳（つうやく）もあります。

## Special events for Foreign families

A joint event with YOKE.  
Events for families from other countries,  
or with foreign connections.  
Interpreters available. Please inquire.

SMD "Smile Multicultural day"  
Our English speaking staff are here  
to help every Friday.



Learn about our events



Events held every month



Reservation required

colors stand for...

Consultation related events

Guidance

Chat time !

Events for families

**SMD "Smile Multicultural day"**  
Our English speaking staff are here  
to help every Friday.



**Psychotherapist  
consultation day**

(Private session)



Psychotherapist will listen and provide you advice and information about your concerns and anxiety in parenting. You can talk in the play area or in a private room.



**Midwife consultation day**  
(A group or private consultation)



Feel free to ask any questions. Anything from breast feeding, parenting skills, your physical concerns, etc. Expectant moms/dads are also welcome!



**Nutritionist  
consultation day**



Feel free to join the group and ask any questions and concerns you have. When/How to start baby's food...



育

"Raising children is fun!"  
Come and consult the nursery head teacher. Let's play and have fun together.

Priority goes to family with children before entering kindergarten, and family living in the Nishi Ward.



保

Nursery Concierge consultation day

The Nishi ward's nursery/ education concierge will come and talk about what you'd like to know about nursery, day care, Kindergarten etc..



Childcare Support Partner consultation day on Zoom

You can consult the Childcare Support Partner on Zoom. About your child, yourself or any other worries in parenting etc..



Smile Mirai day  
~for to-be moms and dads~

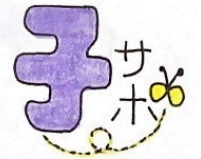
Come to Smile Port and chat with the staffs and families at Smile Port and get connected!! We will give you tips how to bathe and carry a newborn baby.



Smile Debut day  
~for to-be moms and dads~

For families new to Smile Port. Come on the day and we will guide you around the facility.

※For those coming to Smile Port for the first time are welcome to come on other days beside the Debut day.



Guidance day for Yokohama Childrearing Support System

For families wishing to leave their children with a childcare provider. A volunteer support in the community.



## Smile☆Chat Time

Chat time for families that have concerns about children with developmental disability or difficulties.



## Chat Time! for family with both childcare and elderly care

Do you have any stress with childcare and elderly care in the family?  
If so, come and feel free to talk out!



## Chat Time! ~for family with Down's Syndrome or other disability~

Chat time with other families about daily life, physical developments, kindergarten, school etc.



## Chat time ! with Childcare Support Partner

You can consult the Childcare Support Partner in the play area.  
About your child, yourself etc..



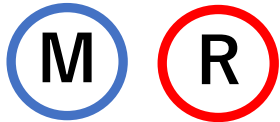
## Chat Time! for mums going back to work!

Get tips and advice from working mums.  
Find out how to juggle work and family,  
how to make "Me time" etc...



**"Smile Multicultural day"**  
**Our English speaking staff are  
here to help every Friday.**





Participation is possible only once during the period 2024.4-2025.3

### Music and Movement program in English

We sing, we dance, we move, we play, and we learn together!  
There will be lots of fun in English!  
Recommended age: 6months-



### Play Time! with a Nursery teacher

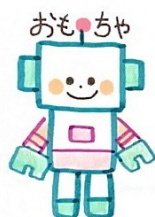
A nursery teacher from Rosset Nursery will come and introduce a special exercise for babies. There will also be Q&A time! Suitable for babies with sufficient neck strength.



### N Clap Bakery

A Baker in Nishi Ward will come to Smile Port!  
Come and buy your breads here!!

**CASH ONLY**



### Toy Doctor

Bring your toys that needs fixing!  
Toys, dolls, and stuffed animals etc.  
"Toy doctor" will fix it!  
\*Please note that not all can be fixed.



### Story Time by volunteer groups

A story time at the end of morning session by volunteer groups;  
"I love this book (Kono hon daisuki)" and "Po Po Po".



### Story Time

A short story time at the end of morning and afternoon session.  
Our staff will introduce books that little ones can enjoy.

**R**



## Play Time! Parent and Toddlers

Stimulate your baby's senses through songs and play.  
Recommended for babies in their crawling stage (before walking).

**R**



## Play Time! for 1-3 years olds

Physical play and crafts activities.  
Have fun with your children.  
Suitable for ages before entering kindergarten.

**M**



## Play time ! with Daddy Yoshimoto

Yoshimoto-san, a volunteer Dad will come and play with your children.  
Find him wearing a blue apron.

**R**



Mom and Dad to-be are welcome !

## Twins & Triplets Event

Let's chat about problems unique to twins and triplets / learn about nursery and kindergarten/ English eurhythmics and others!!

**R**



## Events for Dads

Feel free to join an event time for dads.  
You can learn tips on how to play with your children, how to read books etc.. There is a LINE group "Papa Smile" for dads to join.

**R**



## Smile (^\_^) "Get Connected" Project

Program for families with first child (baby-12months) living in Nishi Ward.  
Get Connected and make friends.



## "Smile Port" in the Park

Let's meet and play at the parks near Smile Port. Our staff will be there!



## Kids Hour

We have toys ready for older children.



## Nishi Ward Event

Wednesday  
9:30-10:45

Play area limited  
due to a Ward Event



## Calling ! Supporters & Little Supporters!

Fun volunteer activity for parents and children! Our activity include physical check ups / cutting out crafts for the displays in the play area etc...



## Baby Massage

A great way to relax with your baby.  
We won't be using oils.  
Choose a simple T-shirt and pants for  
your baby (not body suit)  
Suitable for babies~12months.



## Central Library × Smile Port!

We will take you on a tour to the library. A librarian will come to Smile Port. Find out how to choose books. There will be "story time". We will go and see the mobile library too!



## Happy Birthday Week

Let's celebrate together  
the birthday kids of the month.  
Held twice a day at:  
①11:45- ②15:10-



## Let's find out about Kindergarten

The principals of Nurseries from  
Nishi ward will come and talk about  
the difference between  
nurseries and Kindergarten,  
and the daily life at kindergarten.  
There will be time for Q&A.